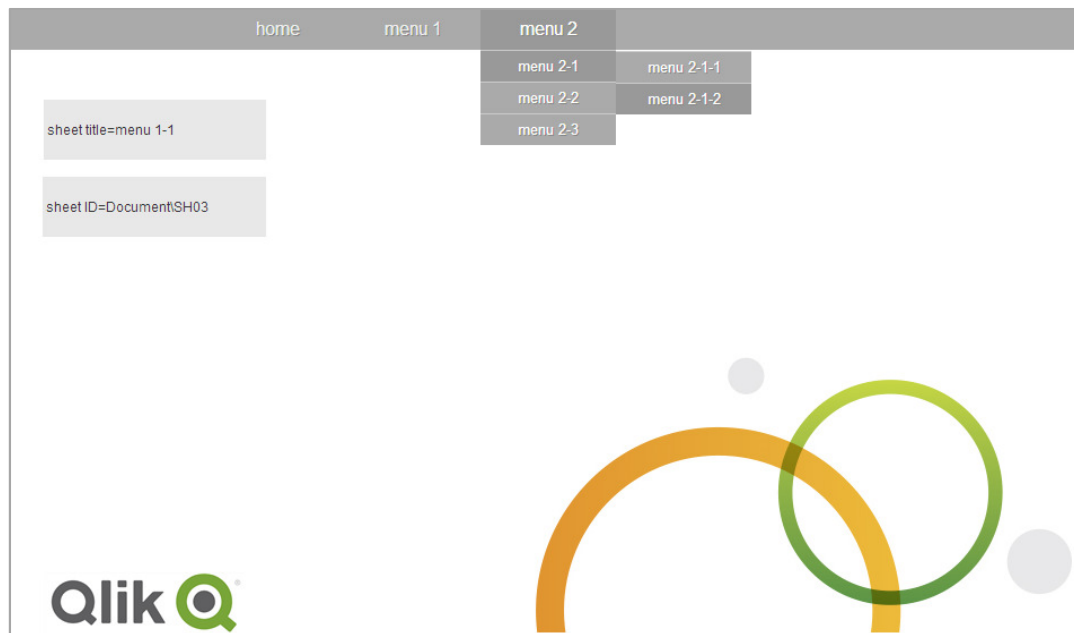


DROPDOWN MENU EXTENSION

Documentation

February 2014

Author: Petra Bloem (petra.bloem@qlikview.com)



Contents

INTRODUCTION	3
INSTALLATION	4
SET-UP	5
BACKGROUND AND DEPENDENCIES	9



QlikView

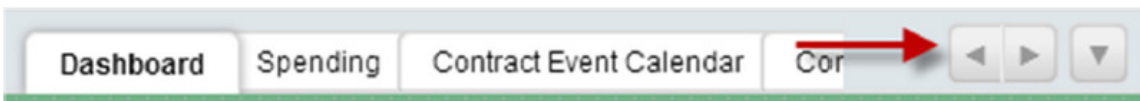
Introduction

When you are using many tab sheets within QlikView your application can easily become unclear and very full. Using standard tab sheets it is not possible to build a hierarchy in your menu.

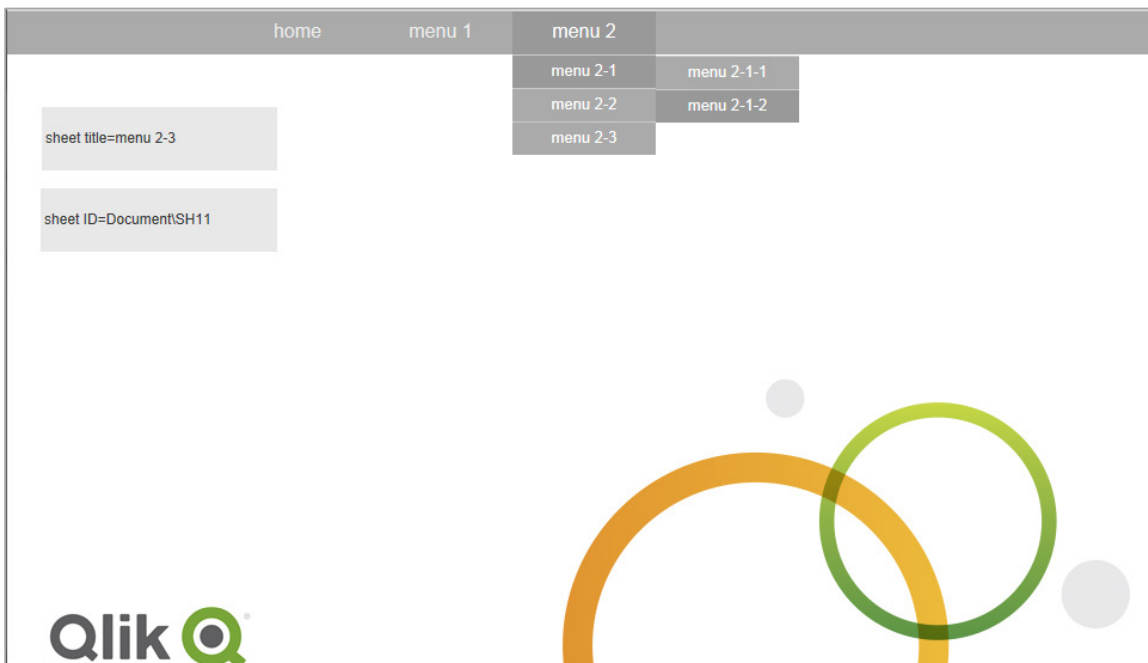
Within QlikView Desktop multiple tab rows will be visible when there are too many tabs for one row.



When using the AJAX client QlikView creates buttons to navigate the rest of the tabs that are hidden.



The dropdown menu extension allows you to build a hierarchy within your menu and manage multiple tab sheets in a structured way. The menu is easy to install and use, you can configure it from within your QlikView application.



Along with the extension (qar file) and this documentation a sample QlikView application is provided to illustrate the usage of this extension.

Installation

Download the qar file and double click to install the extension. The dropdown menu is a **document** extension and after double clicking it will be installed in your local folder, depending on your operating system:

Windows 7:

C:\Users\[user]\AppData\Local\QlikTech\QlikView\Extensions\Document\dropdownMenu

Windows XP:

C:\Documents and Settings\[user]\Local Settings\Application
Data\QlikTech\QlikView\Extensions\Document\dropdownMenu

After this installation you can use the extension within QlikView Desktop. In order to use the extension within QlikView Access Point you also have to install it on your QlikView server. To install this extension on your QlikView server simply copy the above folder and paste it to the server in the specified folder. This is depending on your operating system.

Windows Server 2008:

C:\ProgramData\QlikTech\QlikViewServer\Extensions\Document\dropdownMenu

Windows Server 2003:

C:\Documents and Settings\All Users\Application
Data\QlikTech\QlikViewServer\Extensions\Document\dropdownMenu

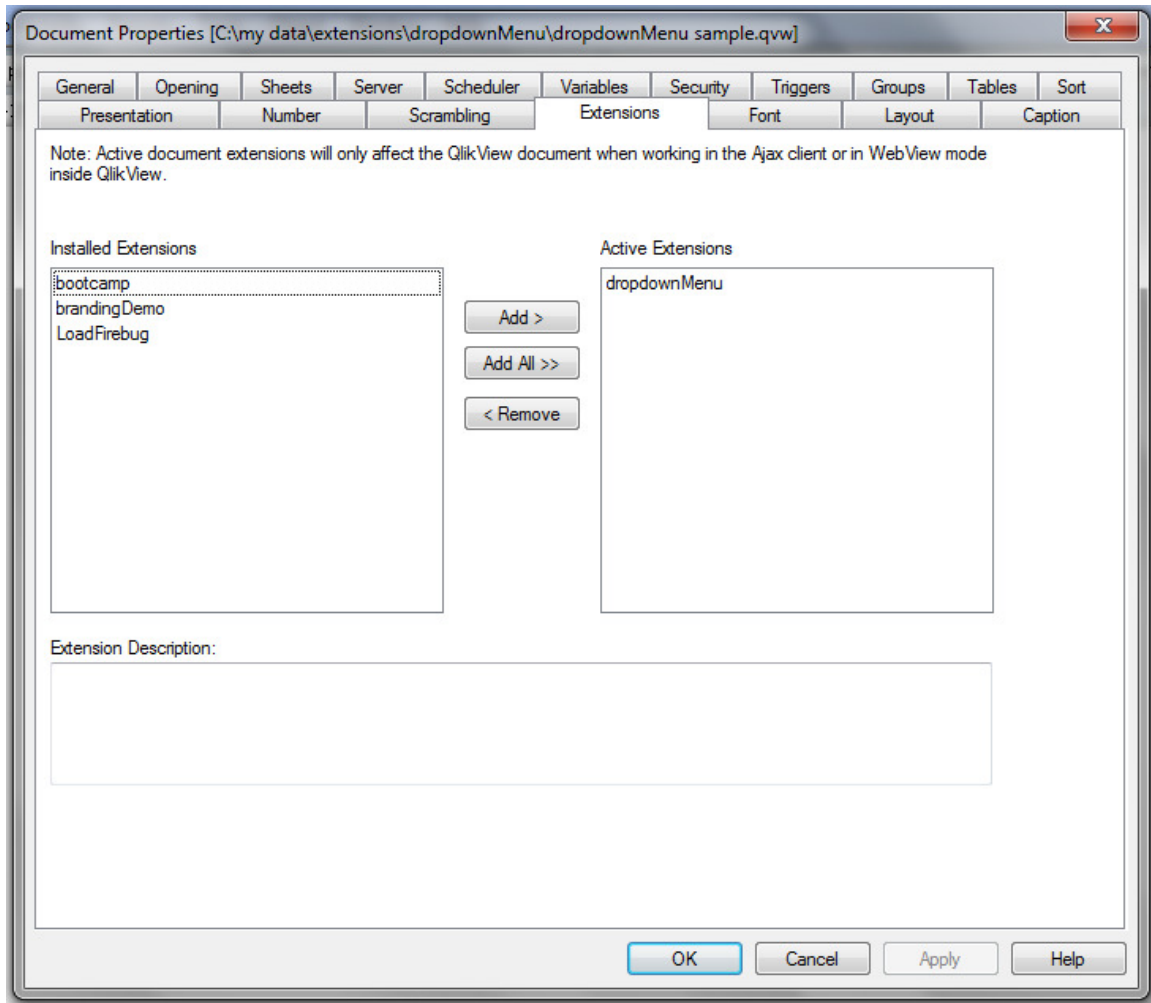
All extensions can be used either in QlikView Desktop with WebView turned on or from the QlikView Access Point using the AJAX client.

More detailed basic information about extensions and installing extensions can be found here:<http://www.qlikblog.at/2848/qlikview-extension-tutorial-basic-concept/>



Set-up

After installing the extension you can use it within your QlikView application. From the QlikView Desktop menu choose Settings > Document Properties and open the tab 'Extensions'. Add the extension 'dropdownMenu' to the Active Extensions.



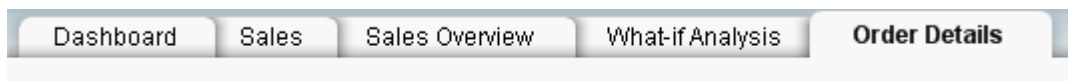
Parameter parentSheetID

The structure of the dropdown menu can be defined using the Title in the Sheet Properties. The parameter **parentSheetID** is added to the title to define the structure.

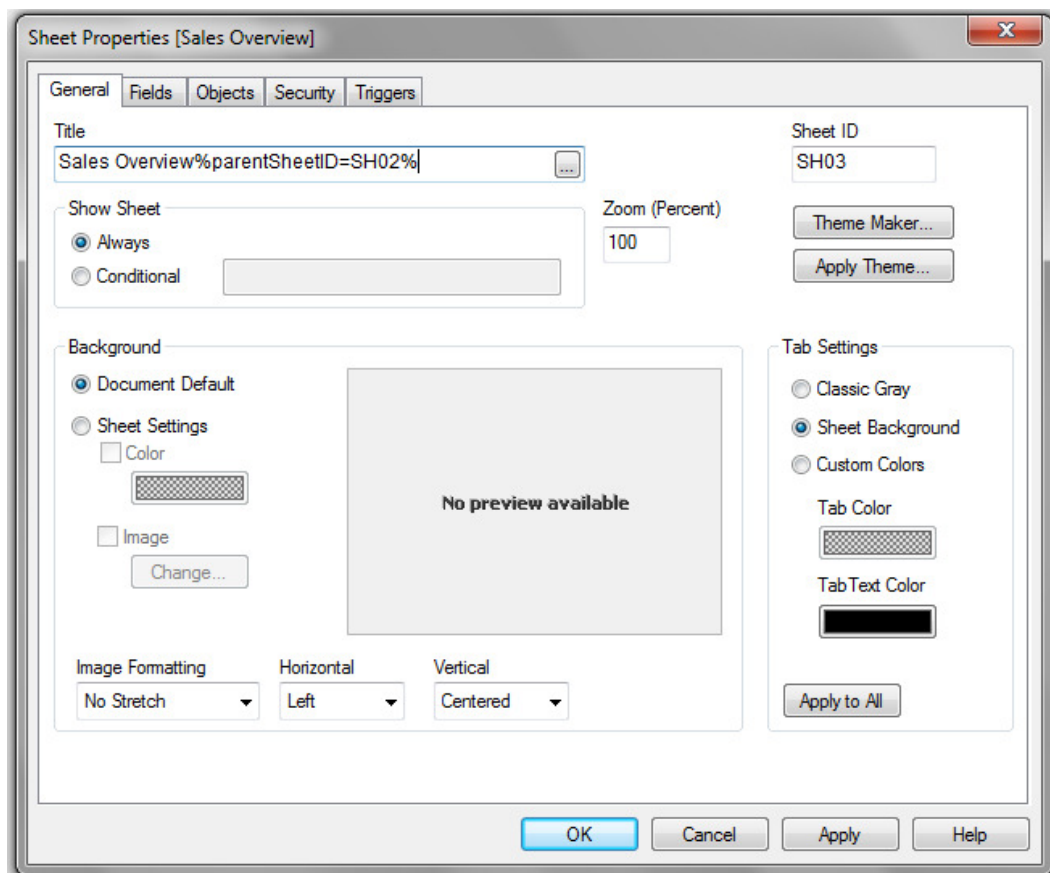
For example we have a QlikView application with 5 tabs:

1. Dashboard
2. Sales
3. Sales Overview
4. What-if Analysis
5. Order Details

Tab sheets 3, 4 and 5 should be a sub menu of tab sheet 2 Sales.



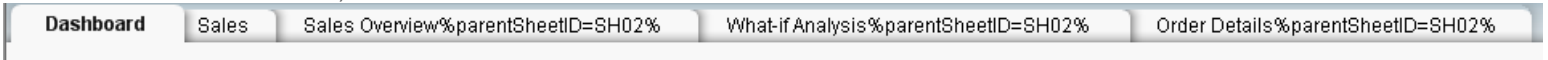
To define this menu structure open tab sheet Sales Overview and select the Sheet Properties. In the Title of the sheet define the parameter **parentSheetID**. Set the parentSheetID to the Sheet ID of its parent. In this case the parent of Sales Overview should be Sales. The Sheet ID of Sales is SH02. Define the parameter within percent signs %.....%.



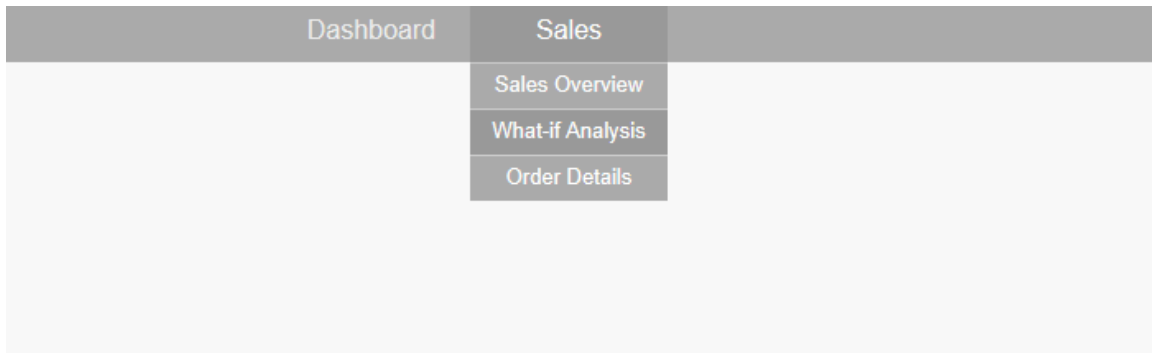
QlikView

When no parentSheetID is defined the tab automatically becomes a main menu item.

In our example after defining the menu structure our QlikView application looks like below.(when WebView is turned off)



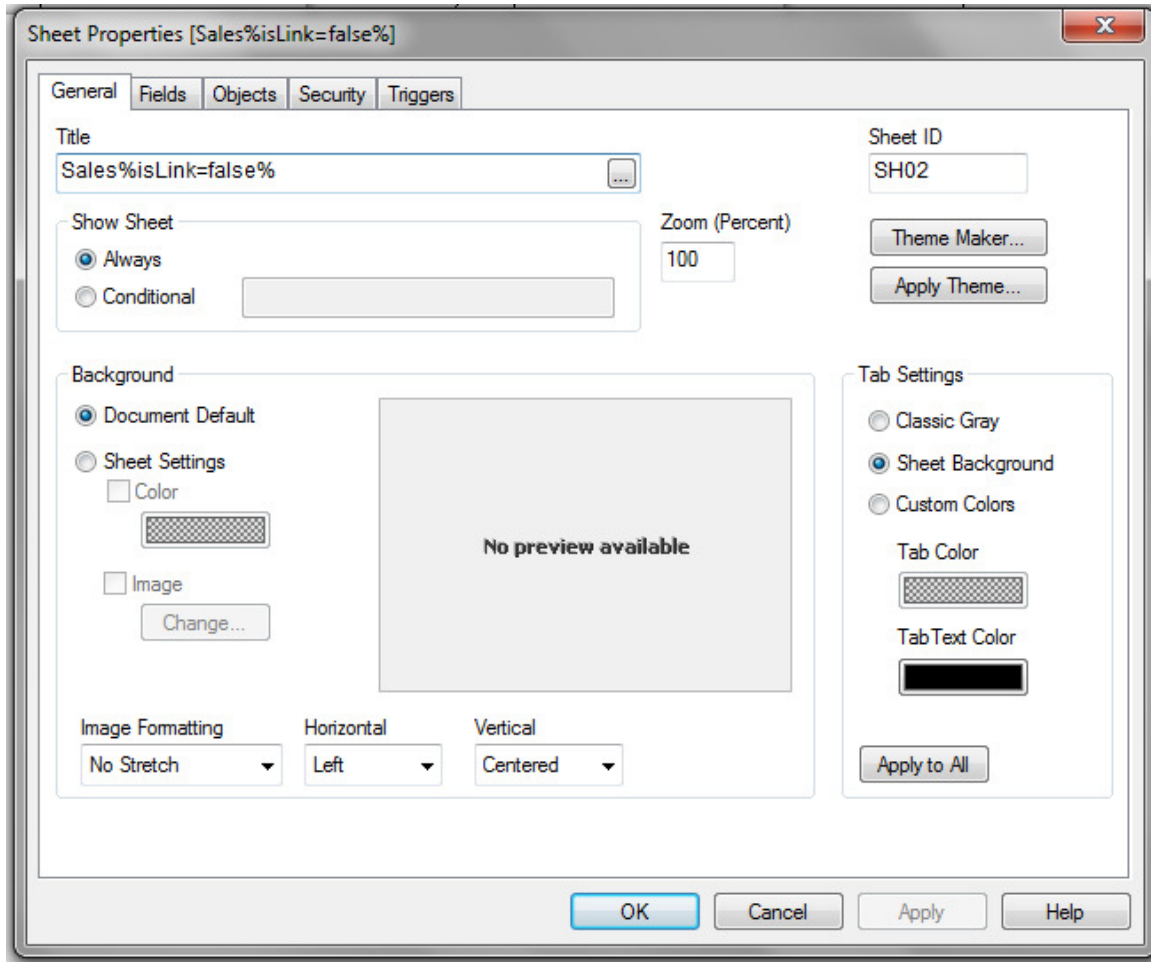
The extension will hide the parameters from the sheet Title. After turning WebView on the dropdown menu looks like this:



Parameter isLink=false

A second parameter can be used defining the menu. You can prevent a menu-item from being clickable. This can be handy when you want to use a certain tab only as a main menu, but not as a separate sheet. In the example above, let's say we don't want to use the tab Sales as a separate tab sheet. It should only be used as a main menu item. This can be configured in the Sheet Properties within the Title. Use the parameter **isLink=false** as shown below.

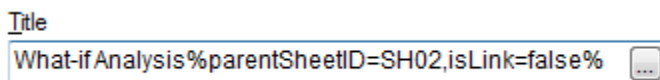




Now the menu item Sales is not clickable. Notice the difference in the mouse pointer when a menu item is clickable or not. In a standard configuration a clickable menu item has a hand pointer and a non-clickable menu item has a normal mouse pointer.



Multiple parameters can be separated with a **comma**.



Parameters are not case sensitive.



Changing the style of the menu

The style of the menu can be changed using CSS. The CSS file for this menu is `tinydropdown.css` and can be found within the extension folder. The default style is:

```
* {margin:0; padding:0; outline:0}
body {font:11px Verdana,Arial; color:#000; background:#fff}
.nav {height:36px; background:#aaa; color:#fff; text-shadow:1px 1px #888; z-index:1000}
.menu a {float:left; color:#eee; text-decoration:none; width:120px; height:28px; padding-top:8px}
.menu span {float:left; color:#eee; text-decoration:none; width:120px; height:28px; padding-top:8px}
.menu a:hover {color:#fff}
.menu {list-style:none; font:16px Arial,Verdana; text-align:center; width:600px; margin:0 auto}
.menu li {position:relative; float:left; width:120px; z-index:1000}
.menu ul {display:none; position:absolute; font:normal 13px Arial,Verdana; top:36px; left:0; background:#aaa; display:none; list-style:none}
.menu ul li {float:none; border-top:1px solid #ccc; width:120px}
.menu ul li a, li.menuhover li a, li.menuhover li.menuhover li a {float:none; display:block; background:none; height:22px; padding-top:5px}
.menu ul li a:hover, li.menuhover li a:hover, li.menuhover li.menuhover li a:hover {background:#999; color:#fff}
.menu ul li span, li.menuhover li span, li.menuhover li.menuhover li span {float:none; display:block; background:none; height:22px; padding-top:5px}
.menu ul ul {left:120px; top:0}
.menu li.submenu {font-weight:bold}
.menu li.noborder {border-top:none}
li.menuhover a, li.menuhover li.menuhover a {color:#fff; background:#999}
li.menuhover span, li.menuhover li.menuhover span {color:#fff; background:#999}
#info {width:180px; background:#eee}
#info li {width:160px; border-top:none; padding:8px 10px; color:#666; text-shadow:1px 1px #fff; text-align:left}
```

Background and dependencies

This extension was build using QlikView 11.2 SR5. It was tested in QlikView Desktop using Webview and from a QlikView Access Point using Google Chrome v33 and Microsoft IE 9.

The dropdown menu that is integrated in this extension is TinyDropdown 2, an open source, animated javascript menu.

<http://sandbox.scripinyin.com/tinydropdown2/>

