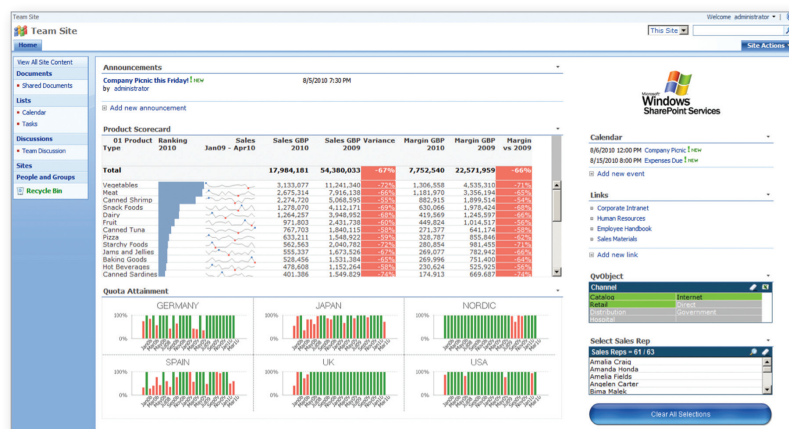


QLIKVIEW WEB PARTS FOR MICROSOFT SHAREPOINT®

QlikView web parts for Microsoft SharePoint® is a plug-in that enables organizations to quickly and easily embed QlikView content in any Microsoft SharePoint portal or application.

Display QlikView content in Microsoft SharePoint

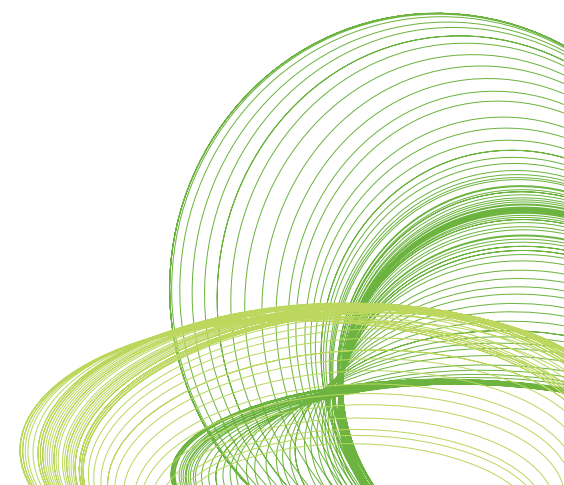


BENEFITS

- **Powerful and intuitive analytics.** Experience the full power of QlikView from within a SharePoint portal or in SharePoint applications.
- **One-stop shopping.** Embed analytics in the SharePoint environment information workers already go to for content and collaboration.
- **Intelligent mashups.** Create mashups that place analytics and related content side by side.
- **Rapid integration.** Add the QlikView object web part, point it at the published QlikView document, and tell it which QlikView object you want it to represent. It's that easy.

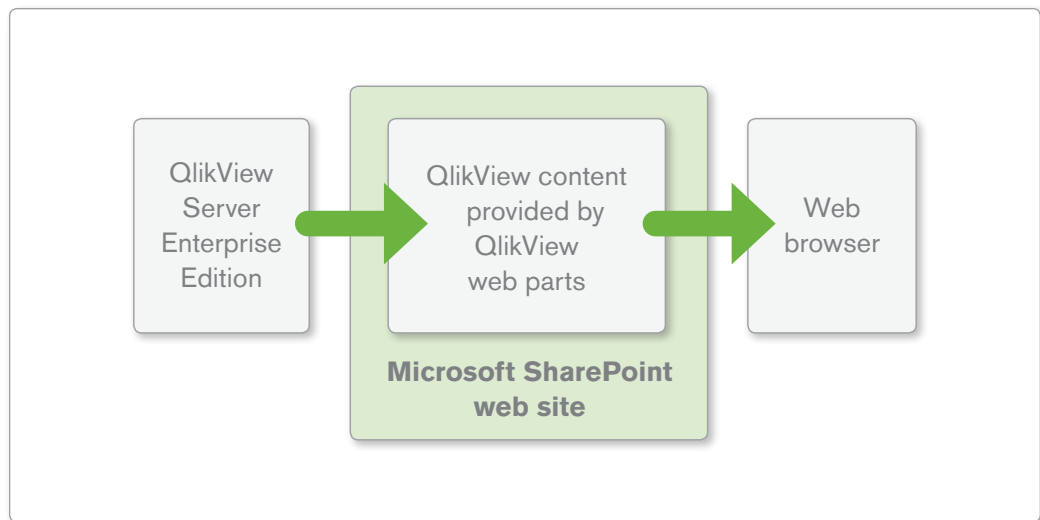
QLIKVIEW IN SHAREPOINT

Your SharePoint platform already provides a “one-stop shopping” collaborative environment for all your information workers. Now you can add even more value to your SharePoint investment by embedding QlikView's world class analytics in a SharePoint portal or application as easy-to-use, intuitive, web parts.

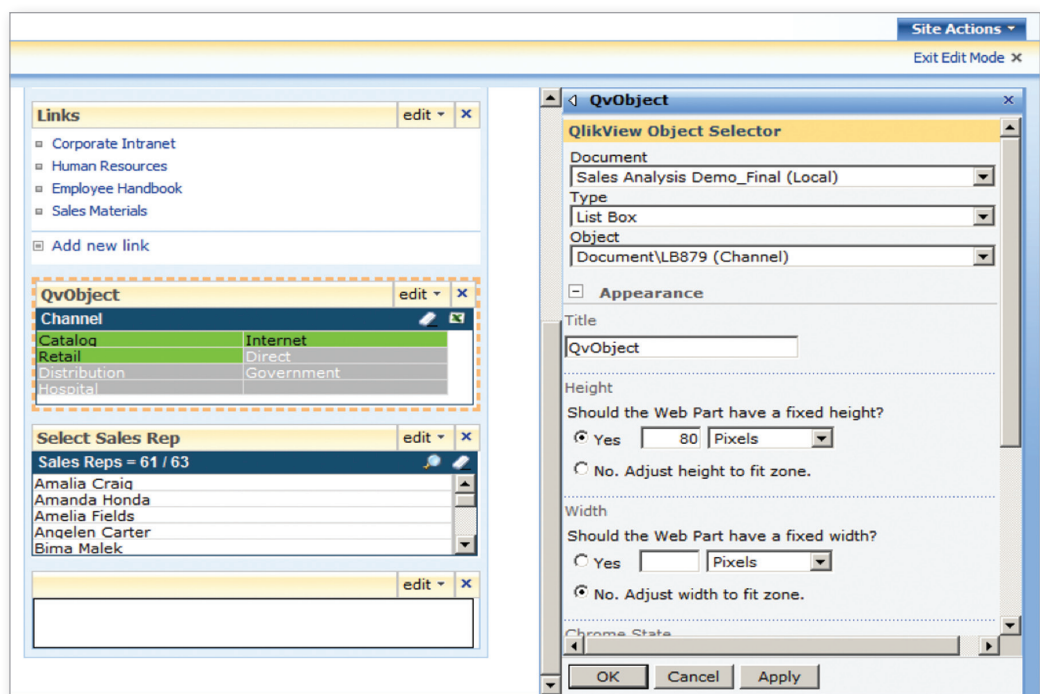


- **Dynamic interaction.** All QlikView web parts react dynamically to each other. A click in one QlikView web part updates all other QlikView web parts that are connected to the same QlikView document.
- **Seamless security.** QlikView web parts leverage the same underlying Microsoft security infrastructure that SharePoint utilizes.

Display QlikView content in Microsoft SharePoint



It's easy to set web part properties for QlikView objects



TECHNICAL SPECIFICATIONS

| QlikView web parts for Microsoft SharePoint®¹ | 32-bit (x86) | 64-bit (x64) |
|---|---|---|
| Microsoft SharePoint | SharePoint Server 2007 SharePoint Server 2010 Windows SharePoint Services 3.0 SharePoint Foundation 2010 (WSS 4.0) | SharePoint Server 2007 SharePoint Server 2010 Windows SharePoint Services 3.0 SharePoint Foundation 2010 (WSS 4.0) |

¹ QlikView web parts for Microsoft SharePoint® is an additional licensed module of QlikView Server. It is installed by applying a license to a QlikView Server and requires QlikView Server Enterprise Edition and appropriate client access licenses.

