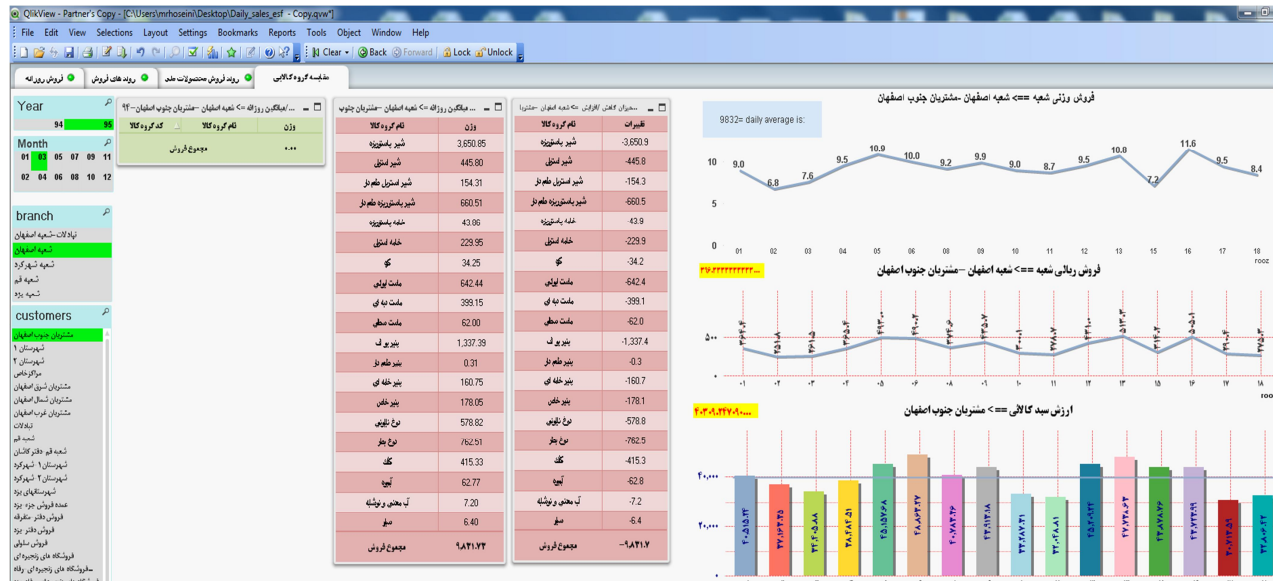


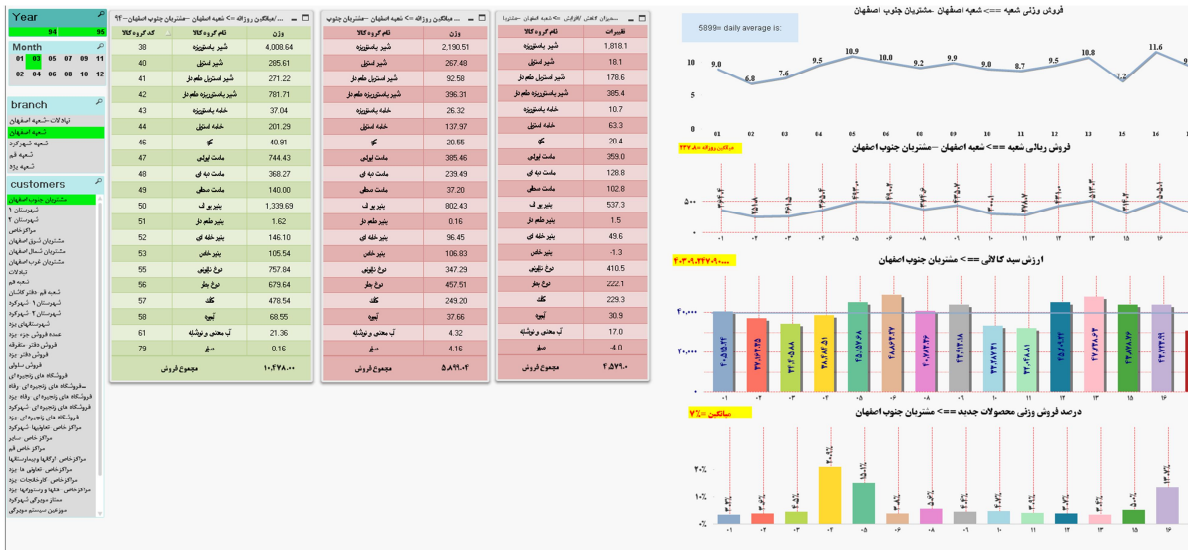
hi

I have a listbox (Year in this image).in this listbox I have two years (94 and 95).when I select 94 or 95 the text box above the first line chart shows the daily mean of sales in month that selected in second listbox(Month)



But when I selected two years(94 and 95) the daily mean of sales in month that selected in second listbox(Month)

Will be wrong.because it calculated for two years in same month



I need to calculate daily means for Year=95 not 94 and 95 and show it in textbox above the line chart.please help me.

Thanks.