

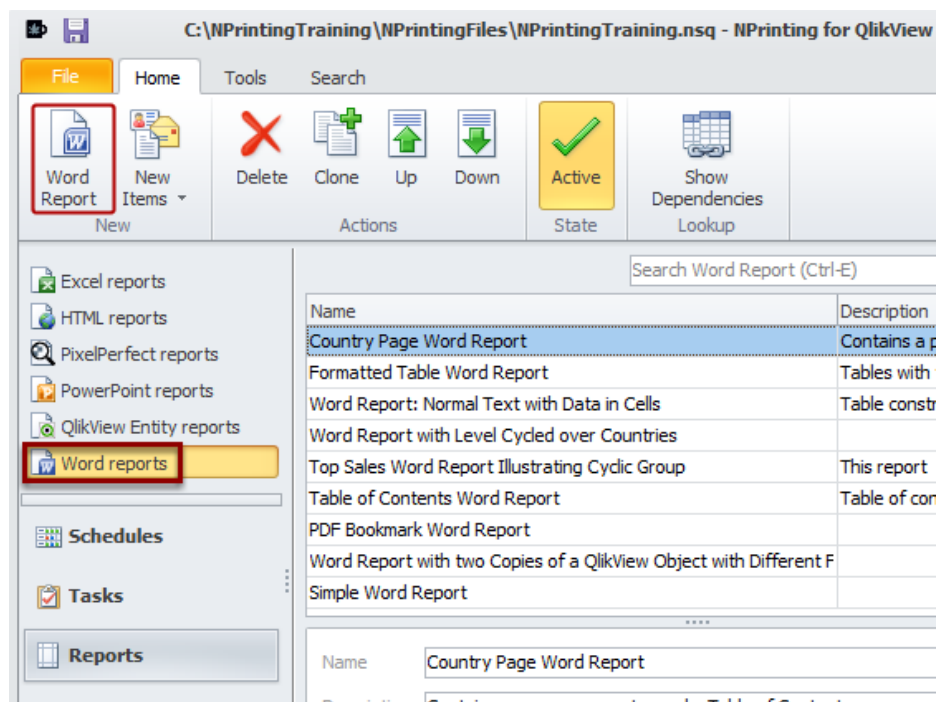
How to Manage Dimensions Containing Cyclic Groups in Word, Excel, PowerPoint and HTML Reports

You can download this tutorial by clicking here: ["How to Manage Dimensions Containing Cyclic Groups in Word, Excel, PowerPoint and HTML Reports"](#).

The "Use This Group Field" property has been added to the Table column Properties menu in Word, Excel, PowerPoint and HTML report templates. It is displayed only for dimensions and only if they contain a Cyclic Group. It has a predefined value, "(Active Field)" which will use the field which is active at run time. It is also possible to force NPrinting to display a specific dimension by selecting it from the list.

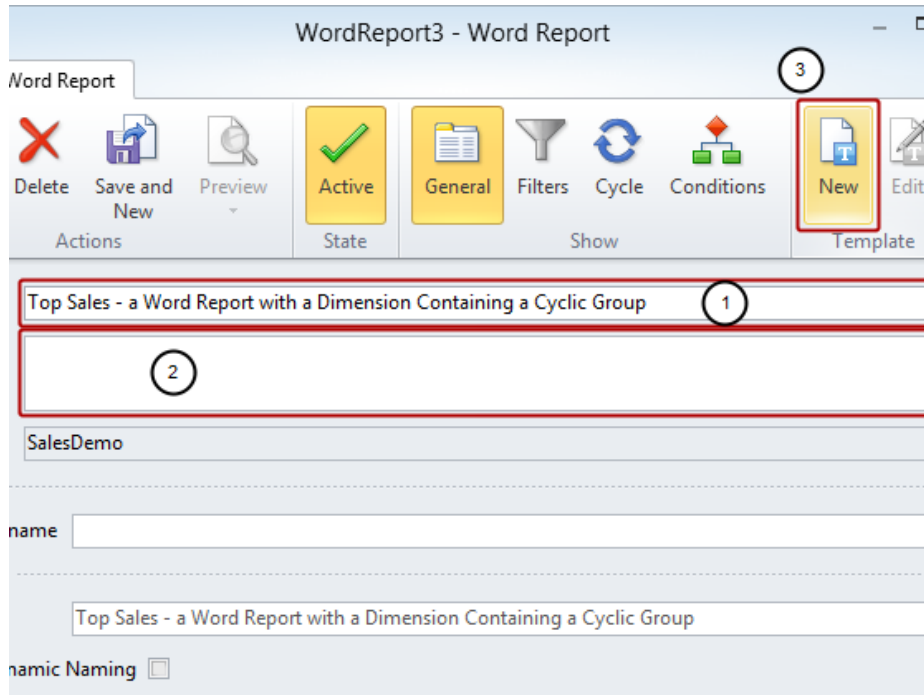
Formula and drill-down groups are not supported.

Create New Word Report



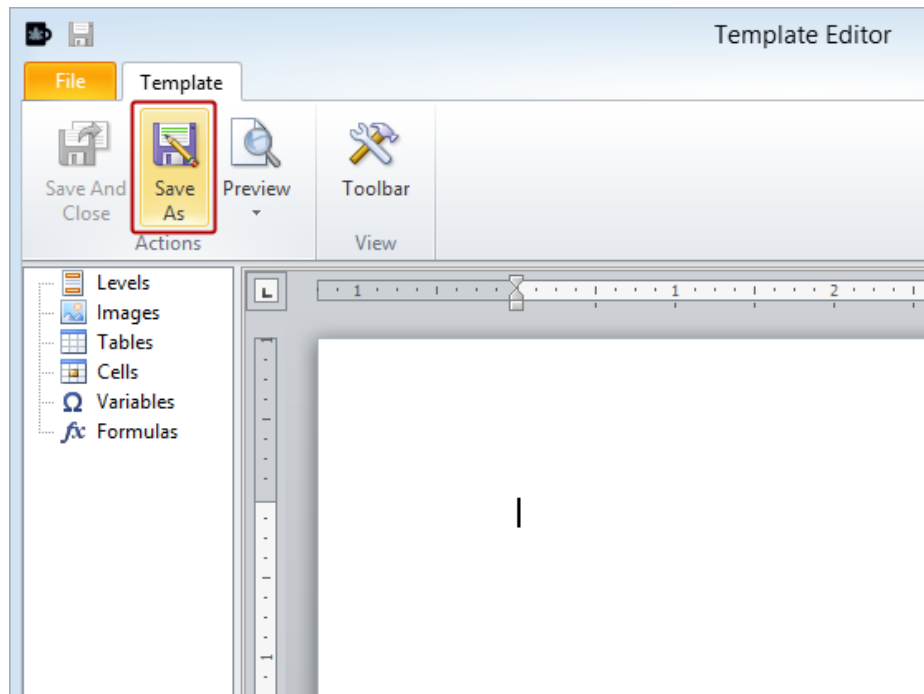
See: [How to Create Word Reports](#)

Set Basic Parameters and Open Template Editor



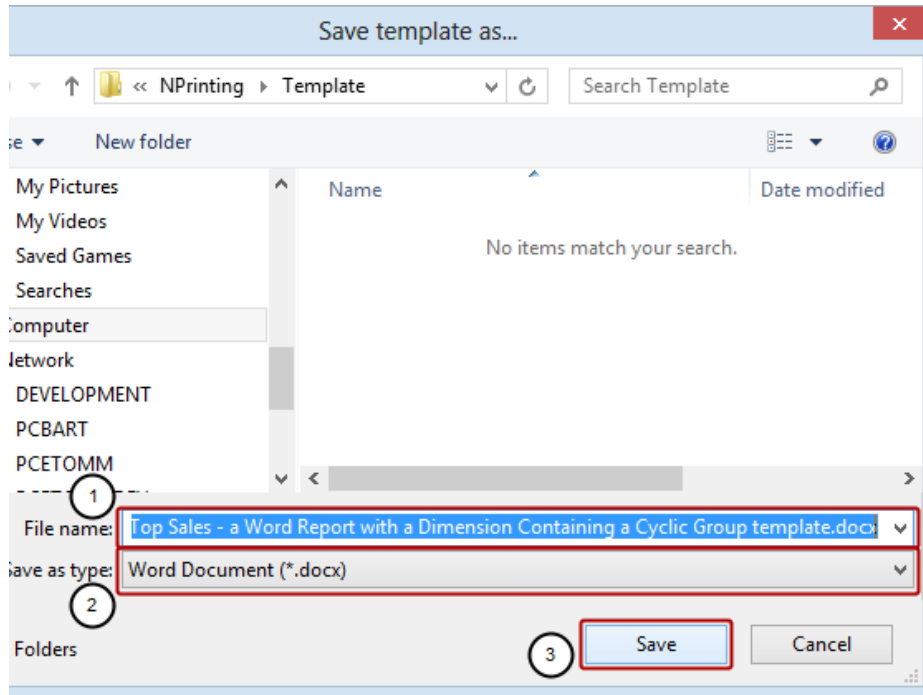
1. Enter a **Name** for your report
2. Enter a more detailed **Description** (optional)
3. Click on the **New** icon in the **Template** group

Save Template



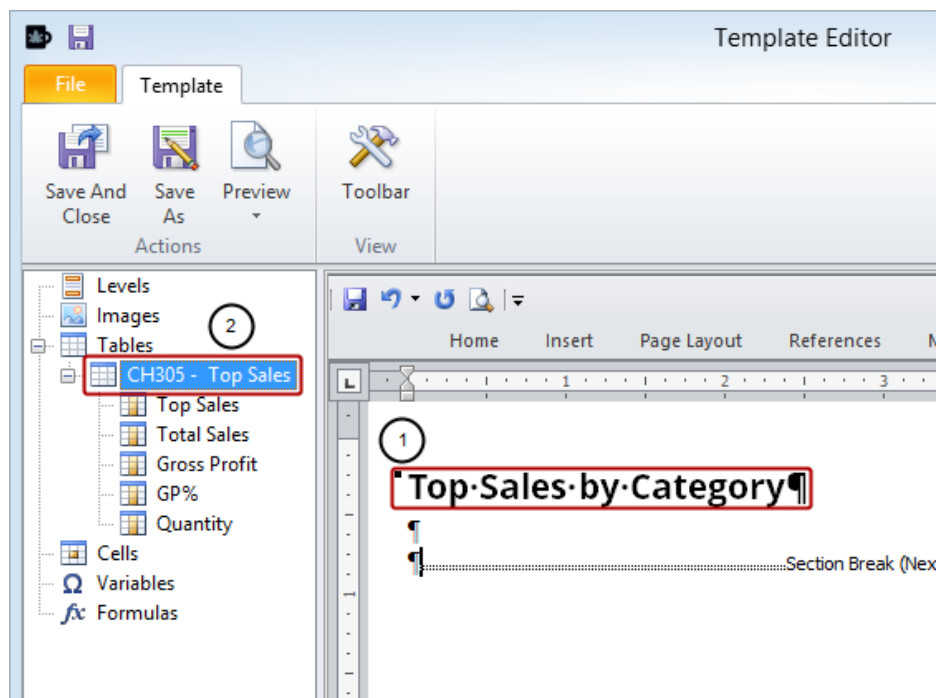
Click on the **Save As** icon

Save Template



1. Enter a **File name** for the template or accept the suggested one
2. **Save as type:** can be set to **Word Document (*.docx)** or the default **Word 97-2003 Document (*.doc)** as they are both compatible with this feature
3. Click on the **Save** button

Add Heading and QlikView Object to Template



1. Add **Top Sales by Category** as a heading to Word template
2. Add QlikView object **CH305 - Top Sales** to template as a table

See: [How to Create Word Reports](#)

Set CategoryName as Field to Be Used

The screenshot shows the 'Properties' pane for the 'Top Sales' table node. The 'Use This Group Field' property is set to 'CategoryName'. The 'Value' cell of this property is highlighted with a red box and a circled '2'. The 'Top Sales' table node is also highlighted with a red box and a circled '1'.

Property	Value
Name	Top Sales
Description	Top Sales
Connection	SalesDemo
Keep Source Formats	<input checked="" type="checkbox"/>
Show Header	Show
Use This Group Field	(Active Field) (Active Field) CategoryName Country Salesman

Top Sa
 This Word template shows you report with five different tables.
Top Sales by Category

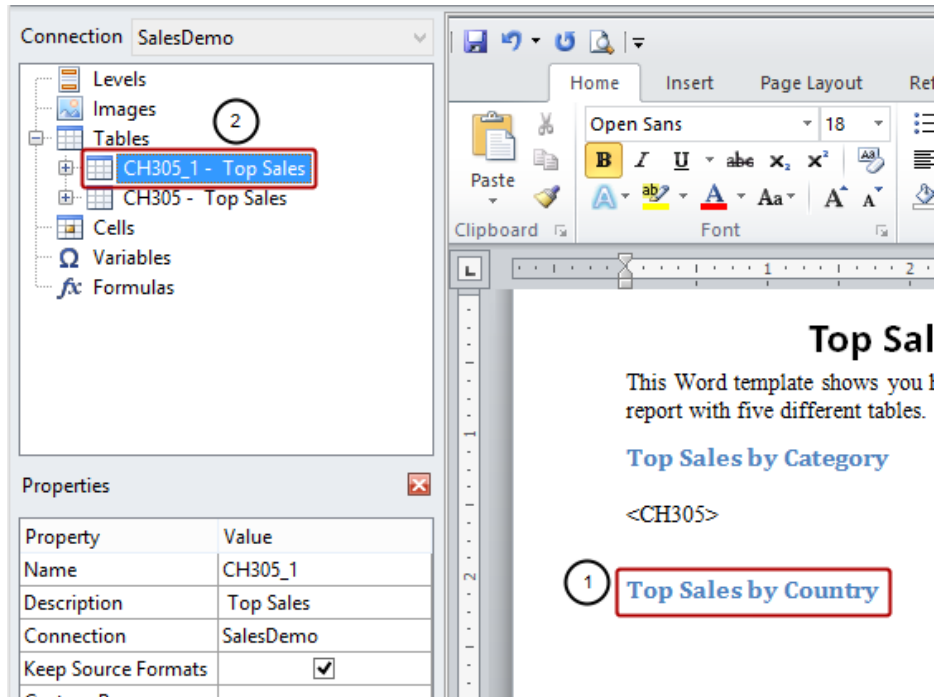
1. Select the **Top Sales** column node under the **CH305 - Top Sales** table node
2. Select **CategoryName** in the **Value** cell of the **Use This Group Field** property in the **Properties** pane

Embed CH305 - Top Sales in Template

The screenshot shows the 'CH305 - Top Sales' table node being dragged from the 'Tables' folder into a Word template. The template text is: **Top Sales by I**, This Word template shows you how to use a report with five different tables. **Top Sales by Category**, and a blue box containing the code `<CH305>`. A red arrow points from the 'CH305 - Top Sales' node to the code box.

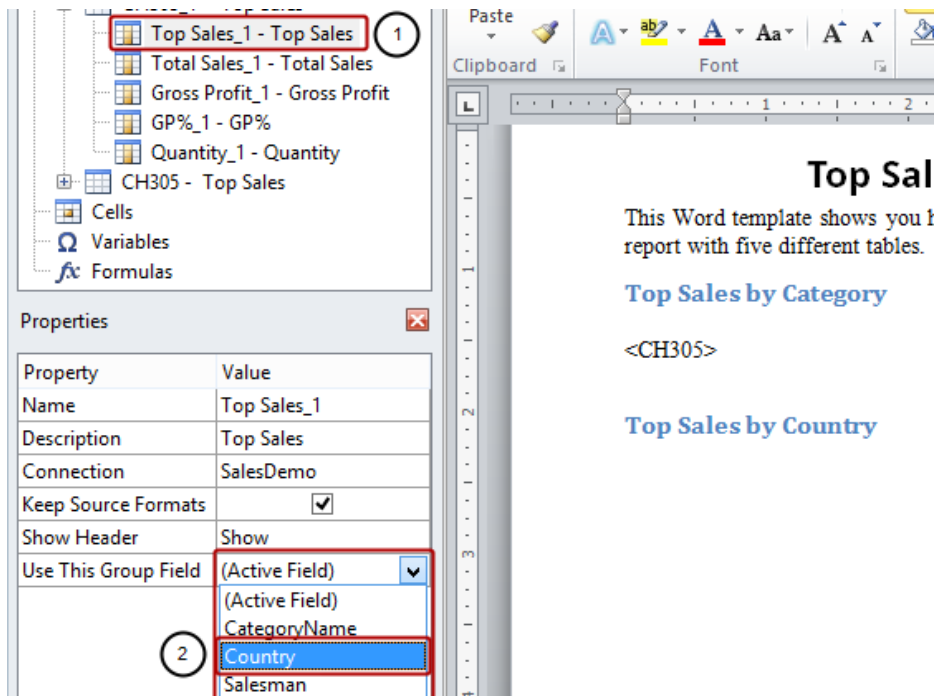
Drag and drop the **CH305 - Top Sales** table-node token into the template.

Add Second Heading and Same QlikView Object to Template



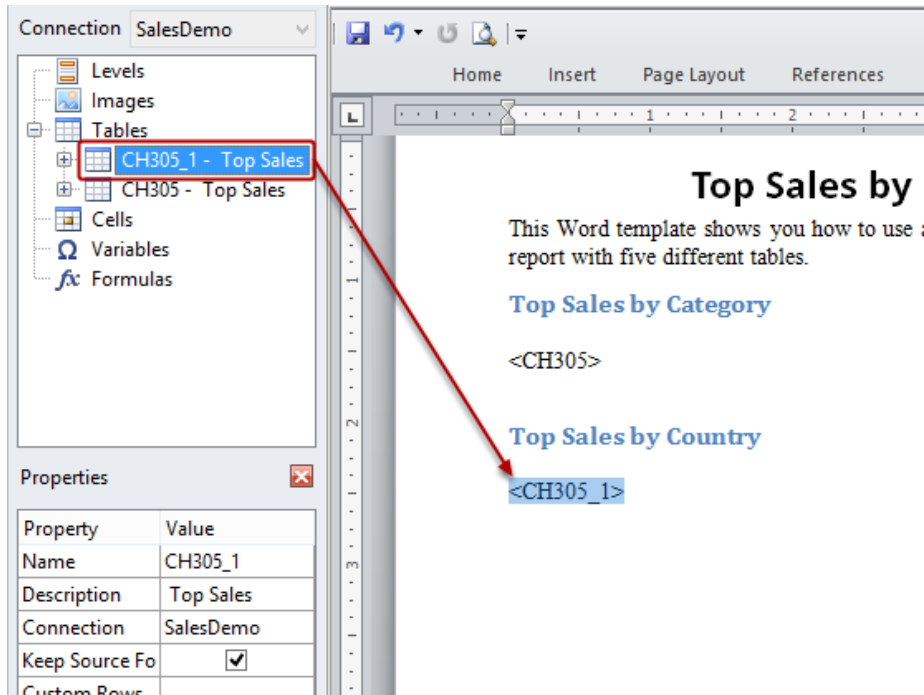
1. Add **Top Sales by Country** as a new heading to the template
2. Add QlikView object **CH305 - Top Sales** to template as a table again, resulting in the **CH305_1 - Top Sales** node

Set Country as Field to Be Used



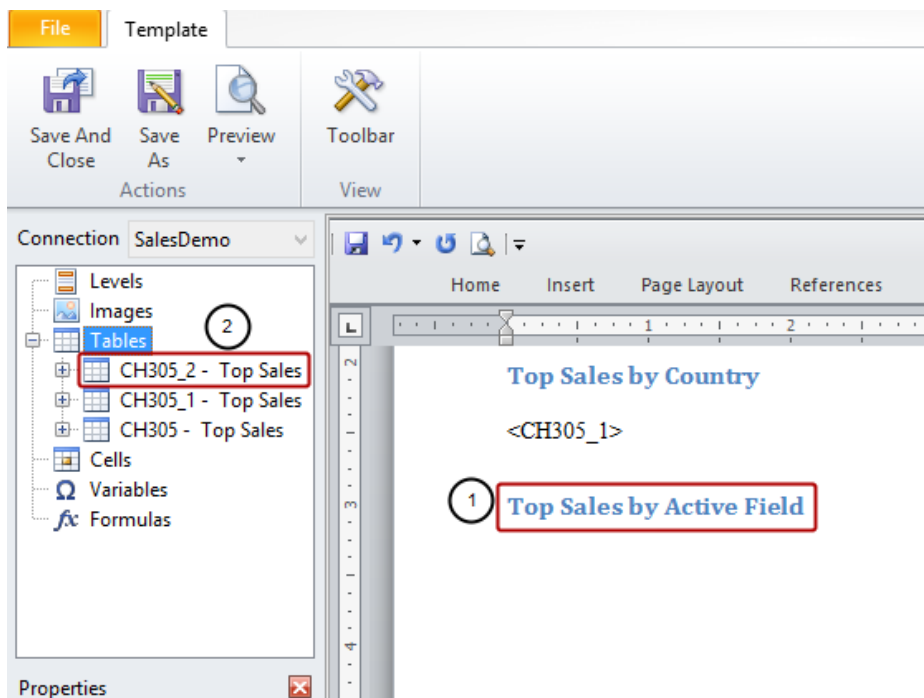
1. Select the **Top Sales_1 - Top Sales** column node
2. Select **Country** in the **Value** cell of the **Use This Group Field** property in the **Properties** pane

Embed CH305_1 - Top Sales in Template



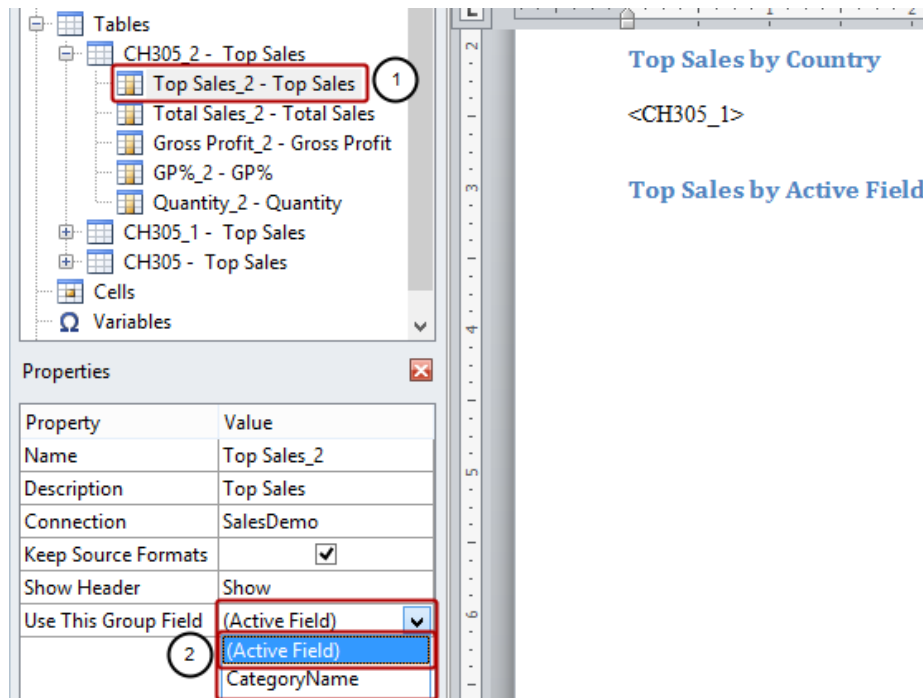
Drag and drop the **CH305_1 - Top Sales** table-node token into the template.

Add Third Heading and Same QlikView Object to Template



1. Add a new heading to the template
2. Add QlikView object **CH305 - Top Sales** to template as a table again, resulting in the **CH305_2 - Top Sales** node

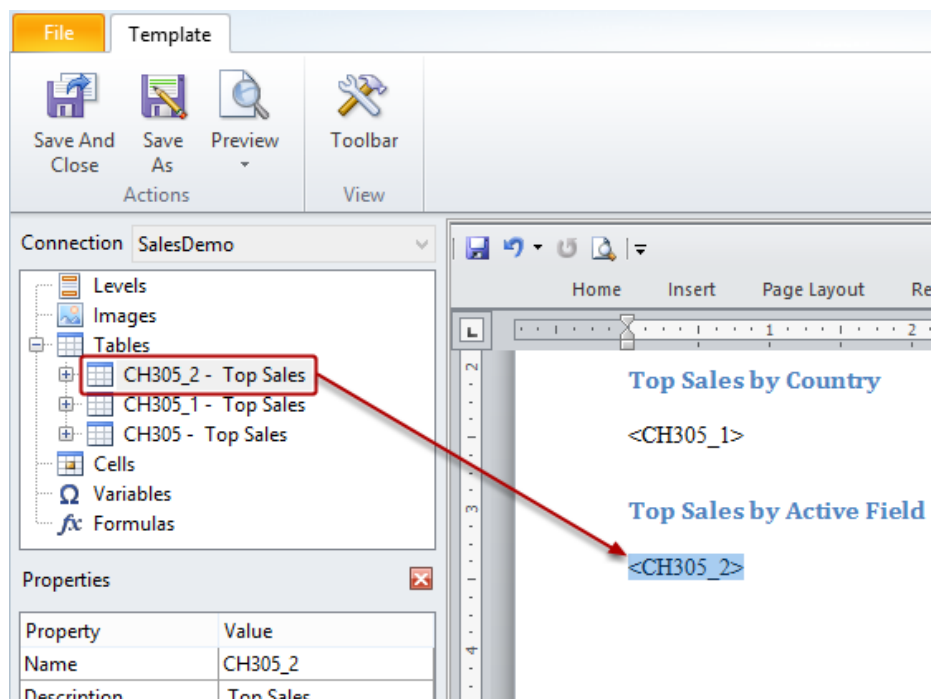
Set Salesman as Field to Be Used



1. Select the **Top Sales_2 - Top Sales** column node
2. Select **Active Field** in the **Value** cell of the **Use This Group Field** property if it is not already selected

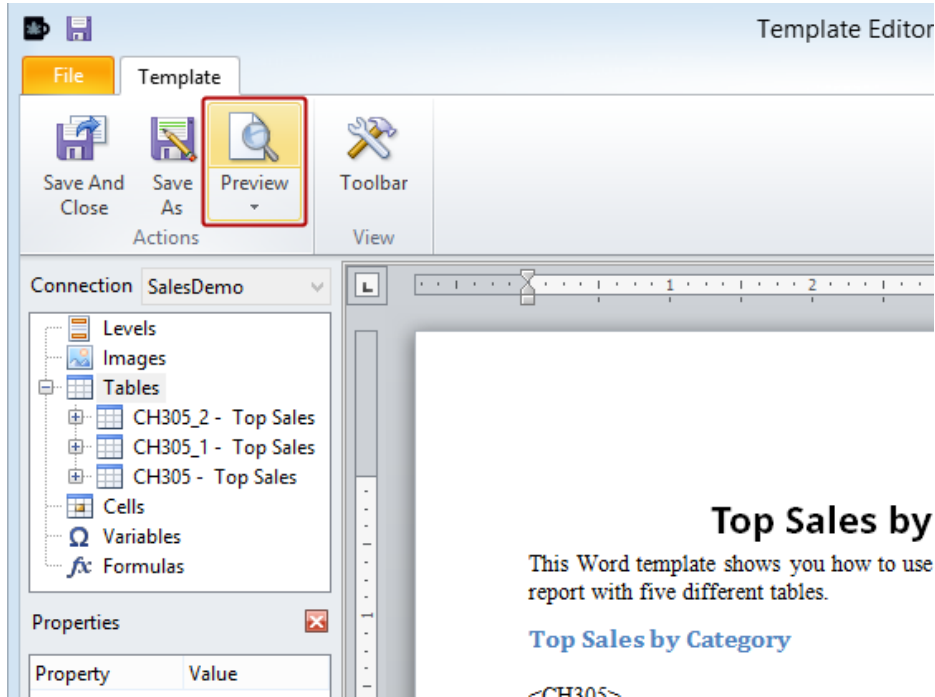
N.B. **Active Field** means the field of the group active at the moment of saving the QlikView document. In this case, though we haven't saved the QlikView document, the last active field is **Country**. If you use **Active Field** in an Excel report template and add the fields one by one, then you need to set **Show Header** to **Show Above Tag Cell**

Embed CH305_2 - Top Sales in Template



Drag and drop the **CH305_2 - Top Sales** node token into the template.

Run Preview



Click on **Preview** in the **Actions** group

Inspect Report Preview

Top Sales by Different Dimensions

Top Sales by Category

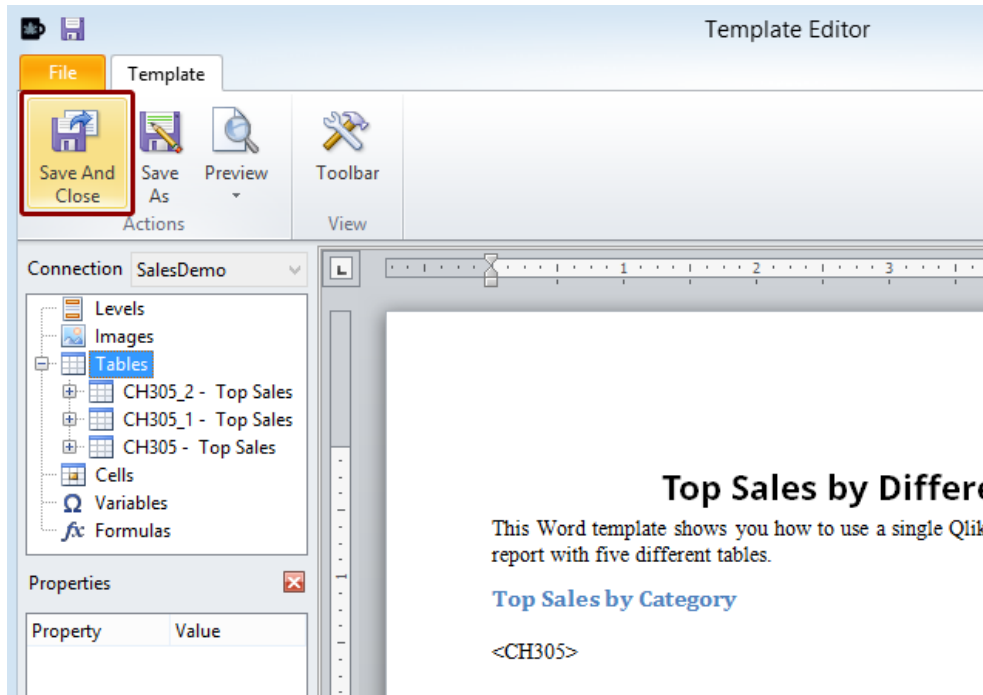
CategoryName	Total Sales	Gross Profit	GP%	Quantity
Women's Wear	\$659.067,22	\$131.808,54	20,0%	7.392
Sportswear	\$278.535,90	\$57.715,69	20,7%	13.551
Men's Footwear	\$241.066,32	\$53.006,67	22,0%	3.693
Ladies' Footwear	\$144.050,74	\$28.361,48	19,7%	4.501
Men's Wear	\$134.369,37	\$28.273,68	21,0%	7.015
Babywear	\$131.123,23	\$27.295,98	20,8%	6.877
Children's Wear	\$80.508,13	\$14.635,39	18,2%	2.140
Bath Clothes	\$48.467,42	\$9.596,01	19,8%	4.651

Total Sales by Country

Country	Total Sales	Gross Profit	GP%	Quantity
Germany	\$510.925,50	\$101.768,25	19,9%	13.674
USA	\$175.173,67	\$34.668,57	19,8%	6.427
France	\$174.856,01	\$37.344,71	21,4%	3.588
UK	\$156.734,76	\$32.828,54	20,9%	3.836

Notice that the table has been repeated but the first dimension displays a different field from the cyclic group and the other dimensions show the relevant data.

Be Sure to Save Your Work



Click on the **Save and Close** icon.